

# MK ITEM / INTERCHANGE NEWS

## MAY New Item Information

### ■ BRAKE SHOE

MK No.	Position	Application	Quotation Month
K2441 Made in Japan Made in indonesia FMSI S764	Rear	Toyota 4-Runner 2700cc,3400cc 00.08-02.08 <EUR,USA,CAN>	May,2024
		Toyota Tacoma 2700cc,3400cc 02.09-04.09 <USA,CAN>	
		Toyota Hiace 2500cc~3000cc 15.01- <THA,ZAF,VNM,KEN>	
		Toyota Tundra 3400cc~4700cc 02.08-06.10 <USA,CAN>	

## MAY New Item Drawing Information

### ■ BRAKE SHOE

a	b	c	R	Shoe Only No.
4.5	2.3	51.5	147.5	M2441
4.5	2.3	51.5	147.5	M2442
4.5	2.3	51.5	147.5	M2443
4.5	2.3	51.5	147.5	M2444

**K2441**

# MK ITEM / INTERCHANGE NEWS

## Valuable Information

### ■ Interchange information (Existing MK item)

MK No.	Position	Application	Year
D1318MH	FRONT	NISSAN PATROL Y62 <GEN-LHD>	2019.07-2021.08
D5183	FRONT	HONDA ODYSSEY	2001-2005
D11493MH	REAR	HYUNDAI SANTA CRUZ (2500cc) <USA>	2021.05-

### ■ Newly start Products with SHIM (Existing MK Item)

MK No.	Origin	Quotation Month
D2286MH	Made in Indonesia	May, 2024

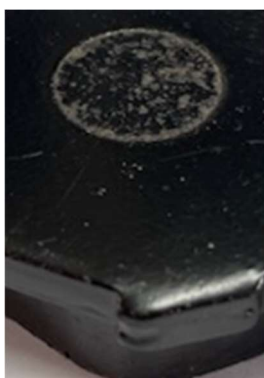
## Announcement

### ■ Changing of back-plate hole

We change back plate hole from flat type to dent type for below MK Number.

If you have any questions, please do not hesitate to ask us.

<Flat>



<Dent>



MK No.	Origin
D6146M	Made in Japan
D7049M	Made in Japan

# MK ITEM / INTERCHANGE NEWS

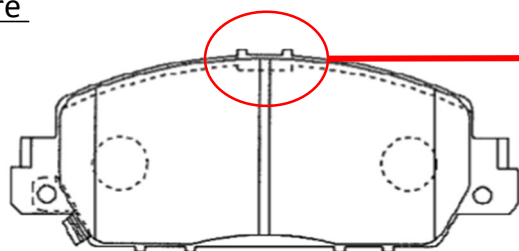
## ■ Changing of back-plate shape

Changing back plate shape as following for below MK Number.

This change is from June shipment.

MK No.	Origin
D5214M	Made in Japan / Made in Indonesia
D5214MH	

Before



After

